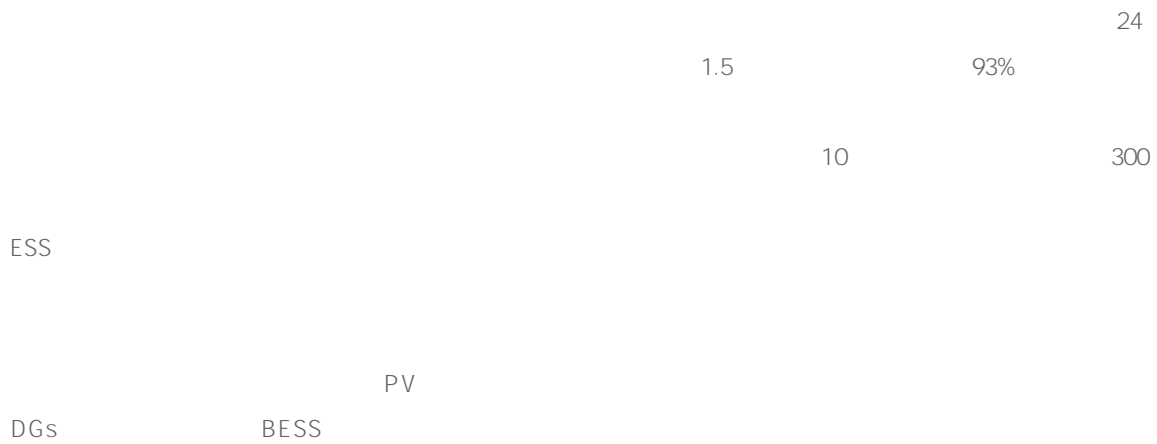
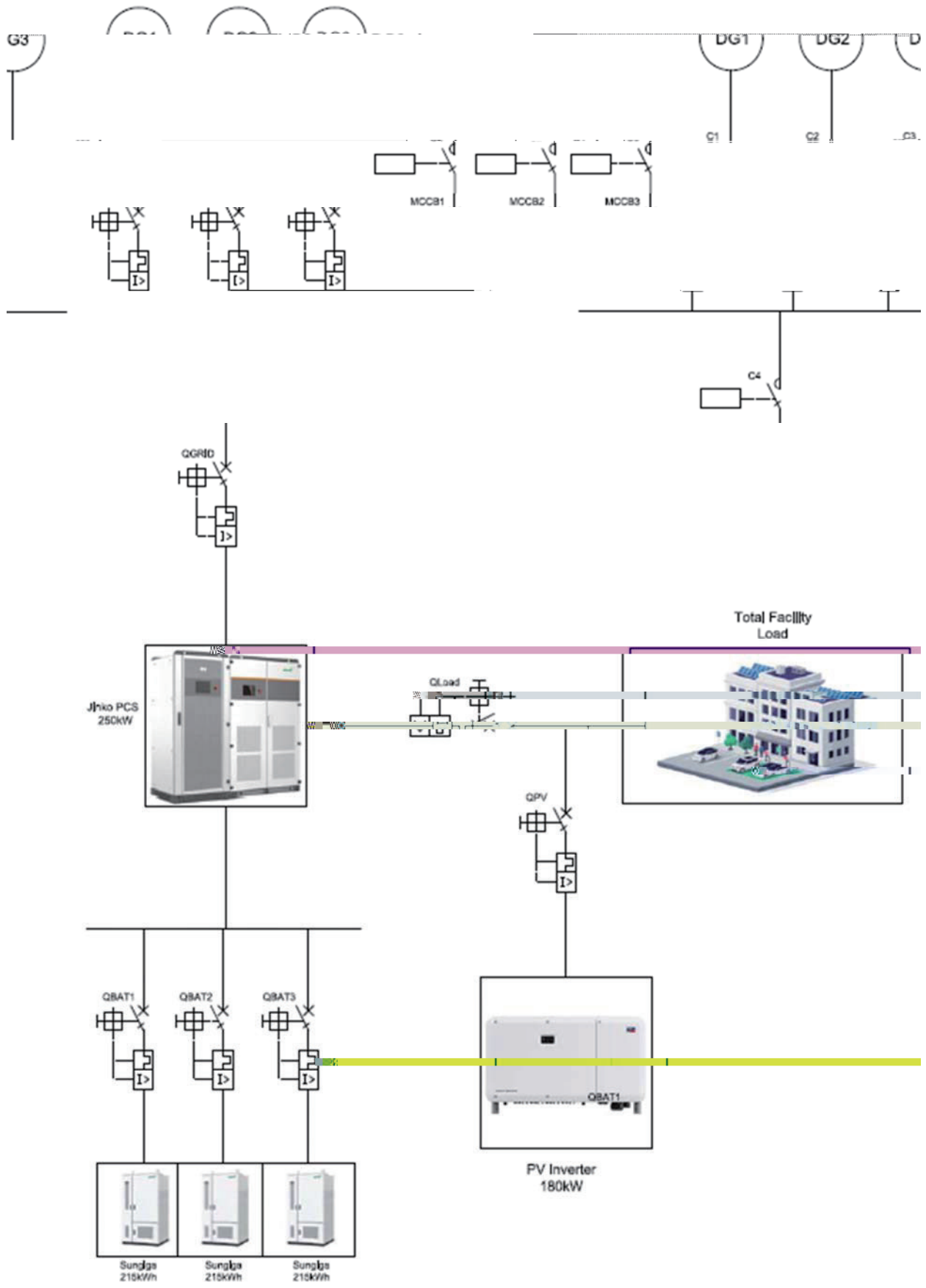




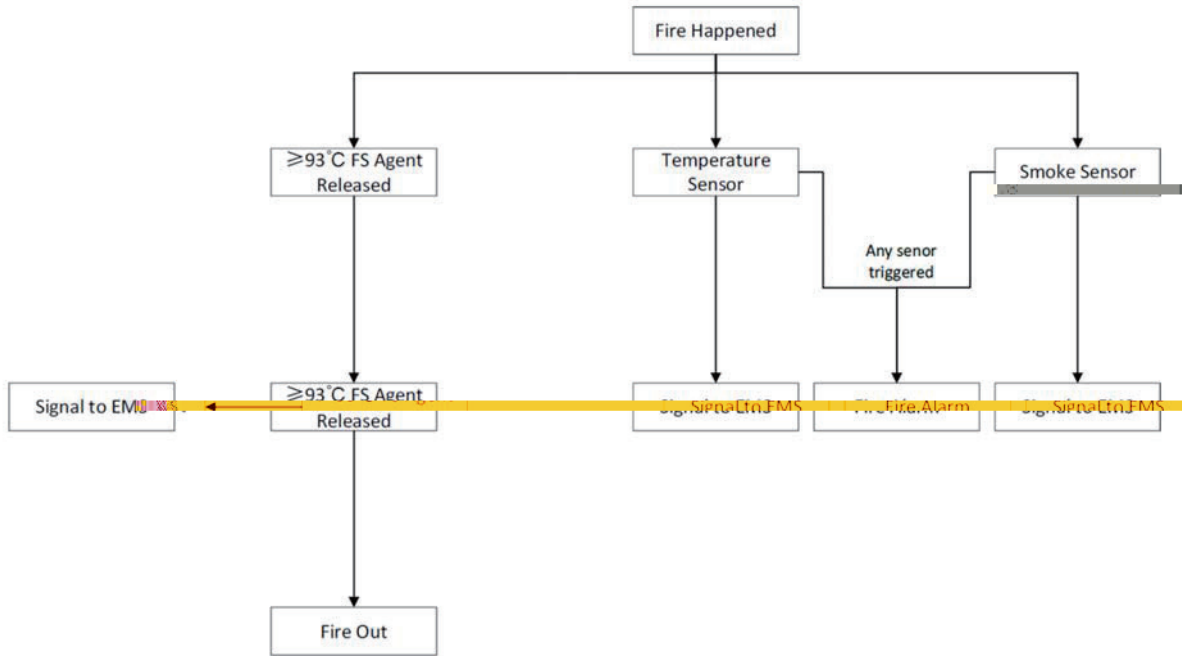
## 中东250kW/645kWh 锂电池储能项目

### Case Study

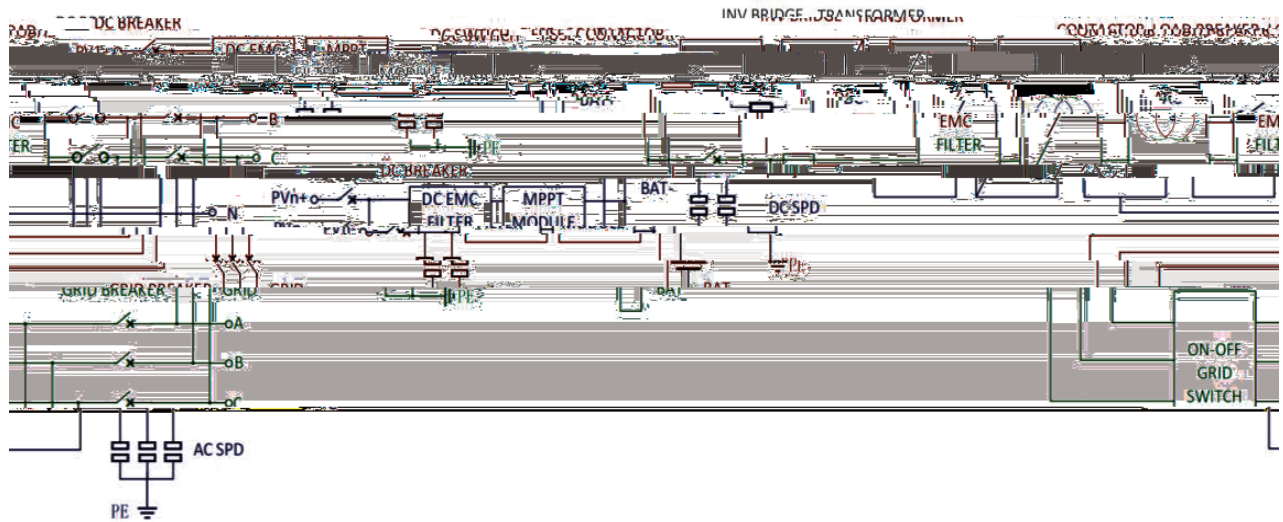








3



4 PCS



$$P_{\text{charging from DG}} = P_{\text{minimum DG load}} - P_{\text{Load}}$$

DG cap 250kW

$P_{\text{charging from DG}}$   $W - P$

SCU

SCU

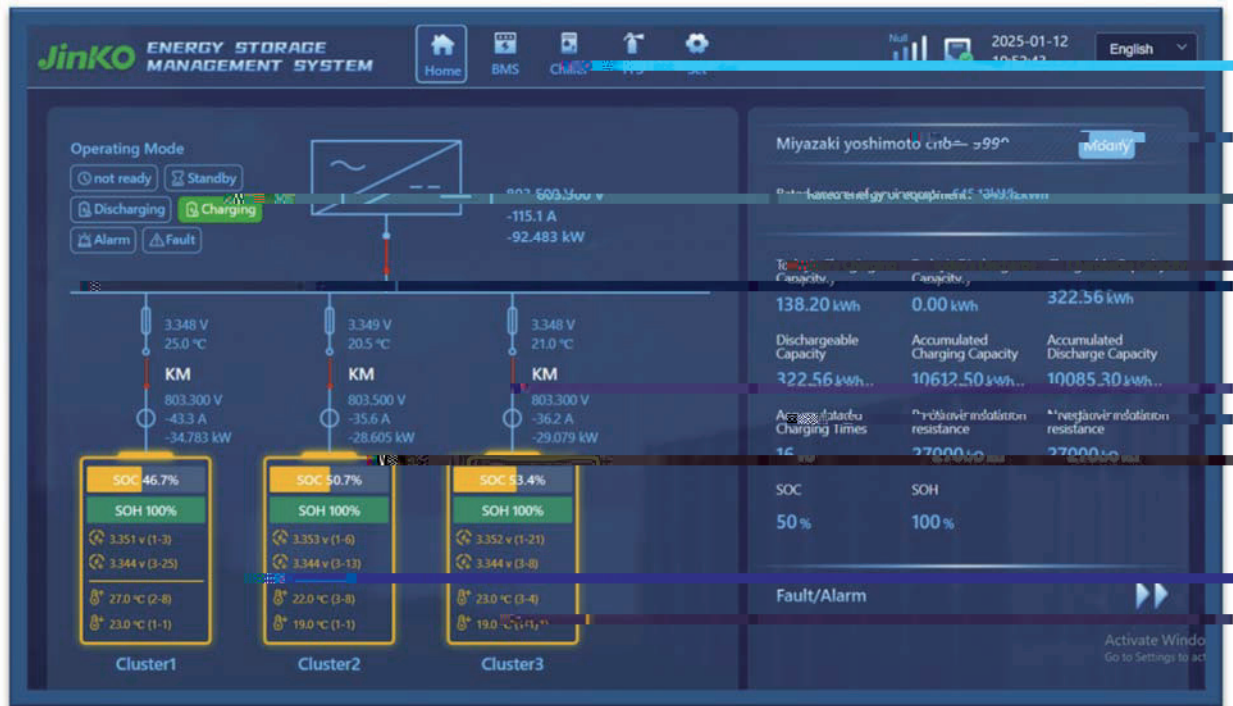
3

FSS

BMUs

BCUs

U

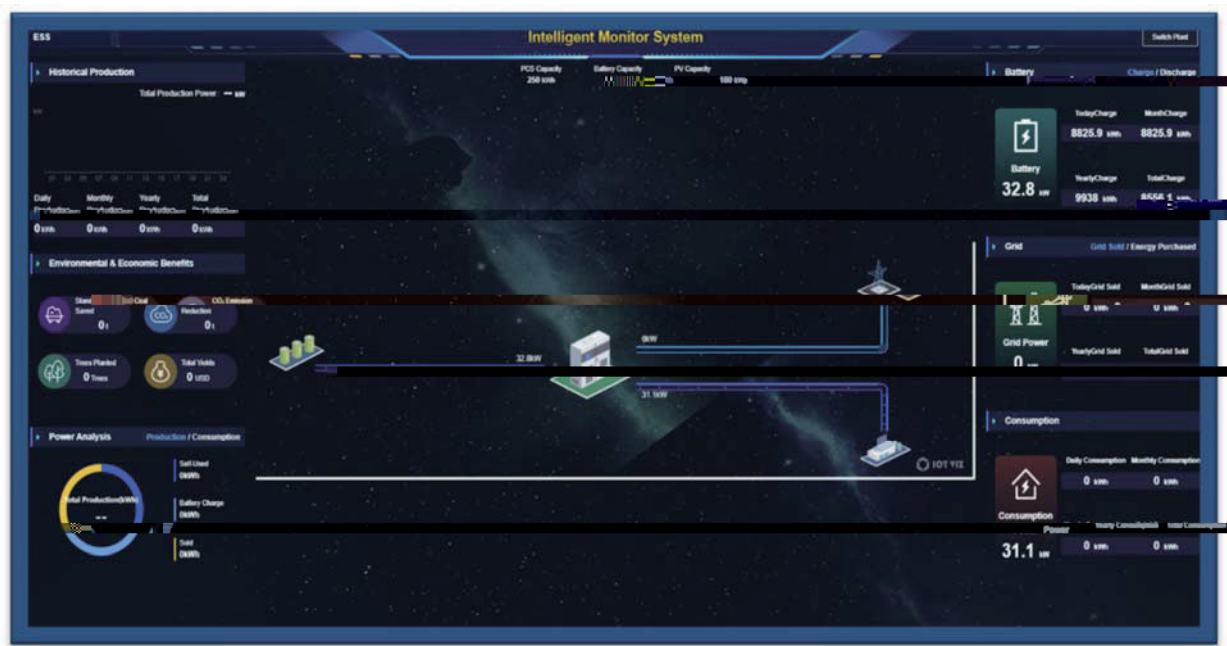


6 SCU



7

IoT



8 EMS

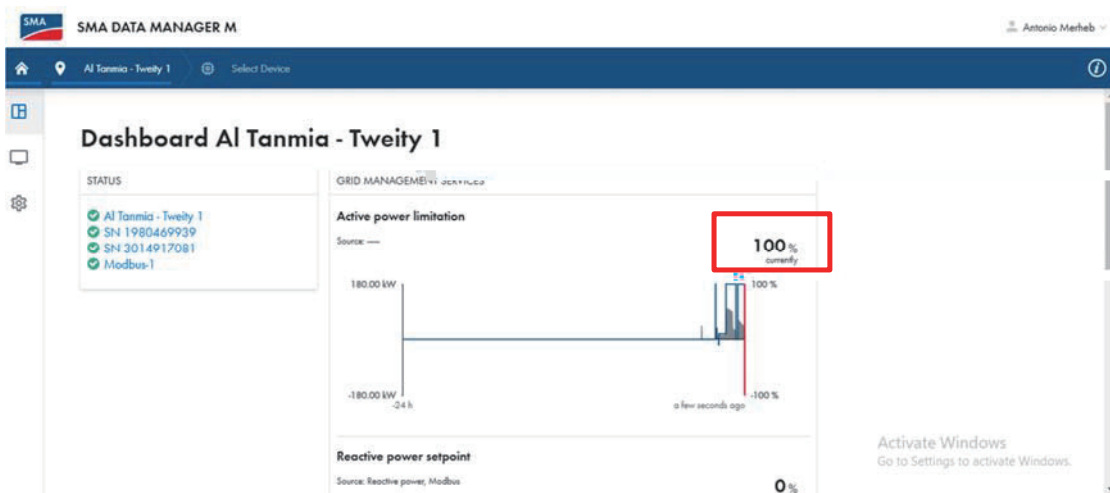
20% SOC 90

SOC

90%

100%

9



9 SMA

EMS

100%

$$\text{Calculated PV } P_{\text{Setpoint}} = 75\text{kW} + 35\text{kW} = 110\text{kW}$$

Calculated PV



98% SOC

*P*

